



Dartmouth Journal Services



# ASN Figure Checklist



ASN

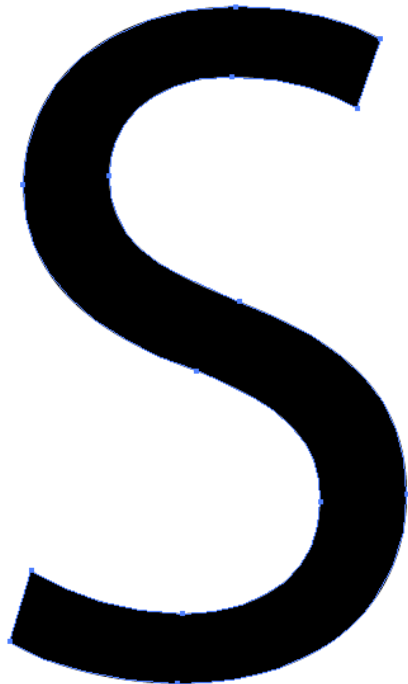
**To speed time to publication and reduce alteration charges, please consider the following before submitting your final figure files.**

# Creating Figure



- Most importantly: create your figure at the size you wish for it to appear in publication – this will avoid the need to reduce it during article composition.
- Use Vector data whenever possible – see the next three pages for more information.

# Vector vs. Raster



Vector text – **can** be enlarged to any size - will maintain sharpness/quality.  
Resolution Independent

Raster text – **cannot** be enlarged to any size – will lose sharpness/quality.  
Resolution Dependent

***Vector artwork is preferred for text, shapes, lines, etc.  
Photographic images have to be raster.***

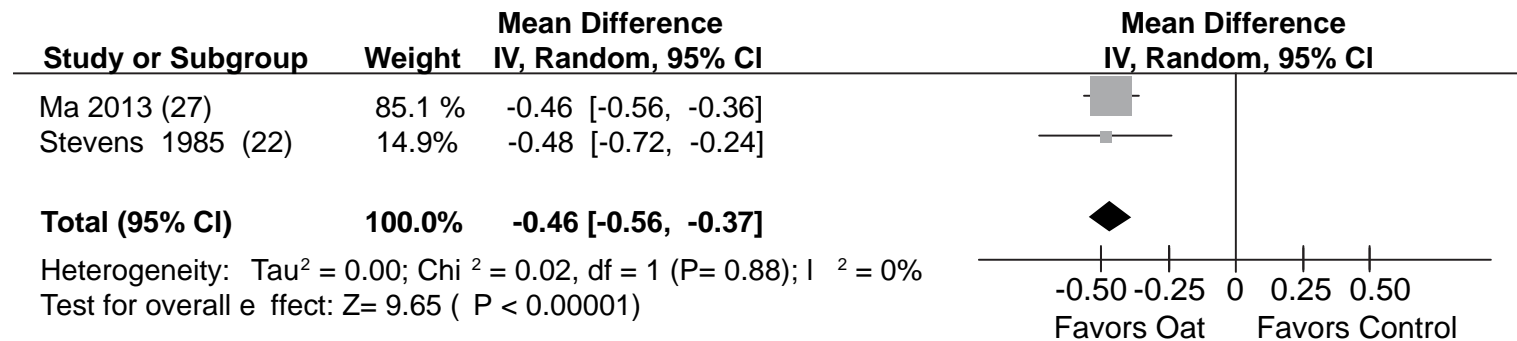
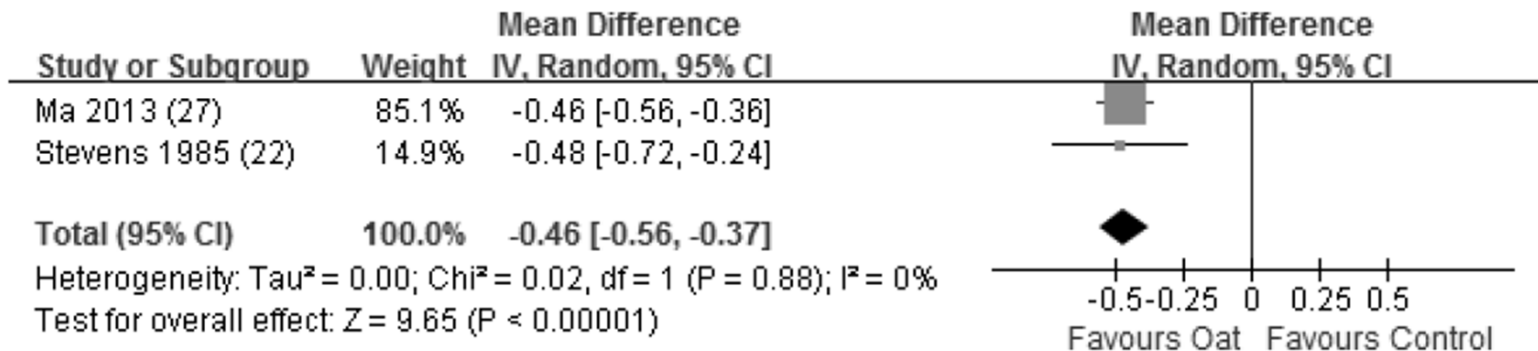
# Vector vs. Raster



- Create and maintain vector artwork and text whenever possible – this type of artwork will be the best quality. Note:
  - Vector = Object/Shape Oriented Artwork
  - Raster = Artwork made from Pixels
- Formats which support vector data:  
PDF, eps, ai (Adobe Illustrator), MS Office
- Formats which do **not** support vector data:  
tif, jpg, png

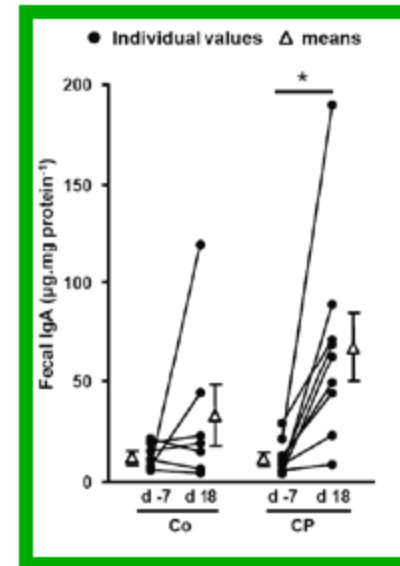
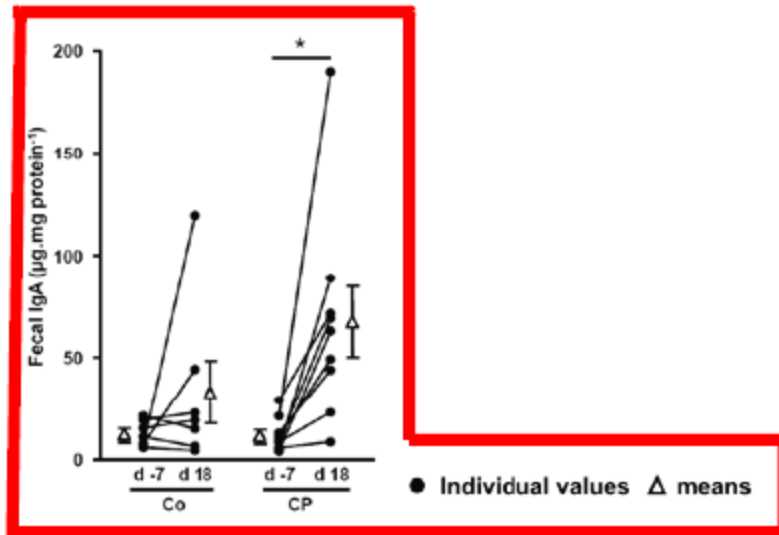
# Forest Plots

## Use Vector for Forest Plots:



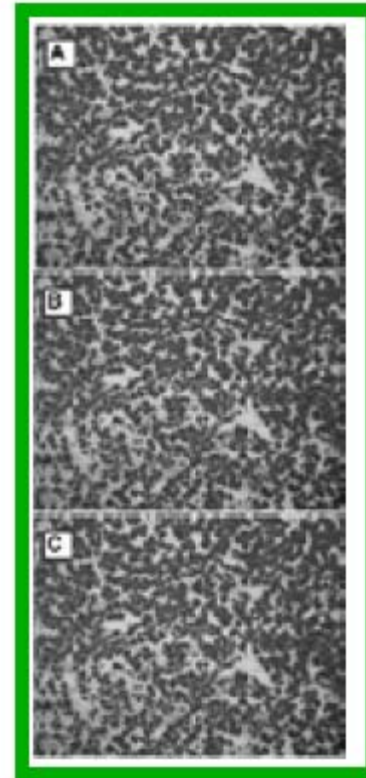
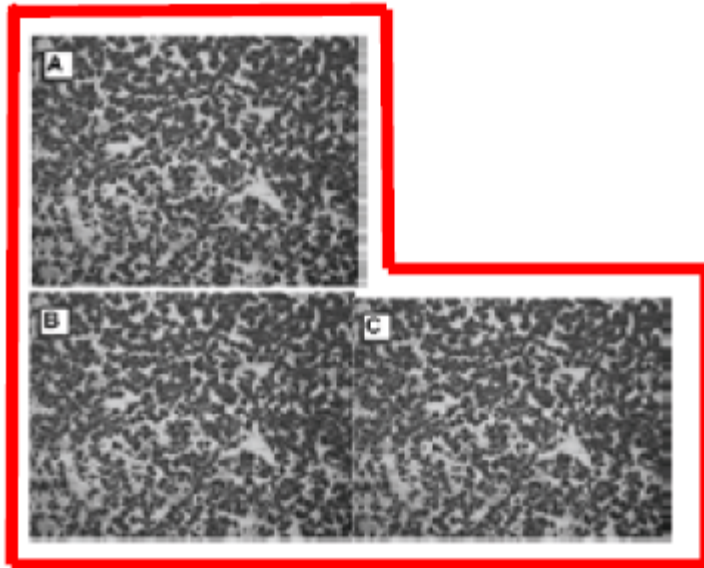
# Layout

Your figure should generally fit into a square or rectangle



# Layout

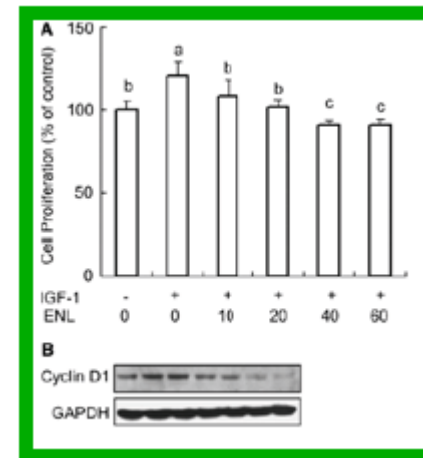
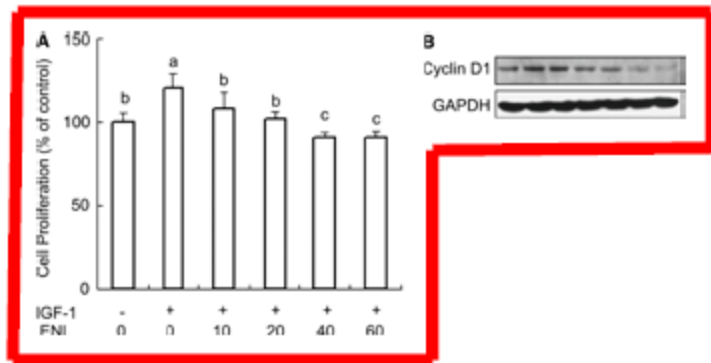
Your figure should generally fit into a square or rectangle





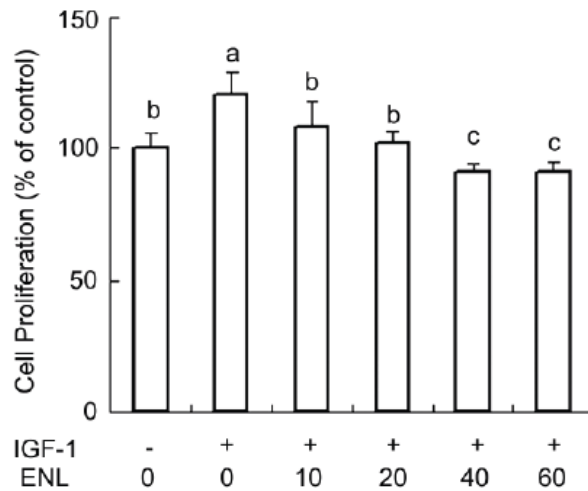
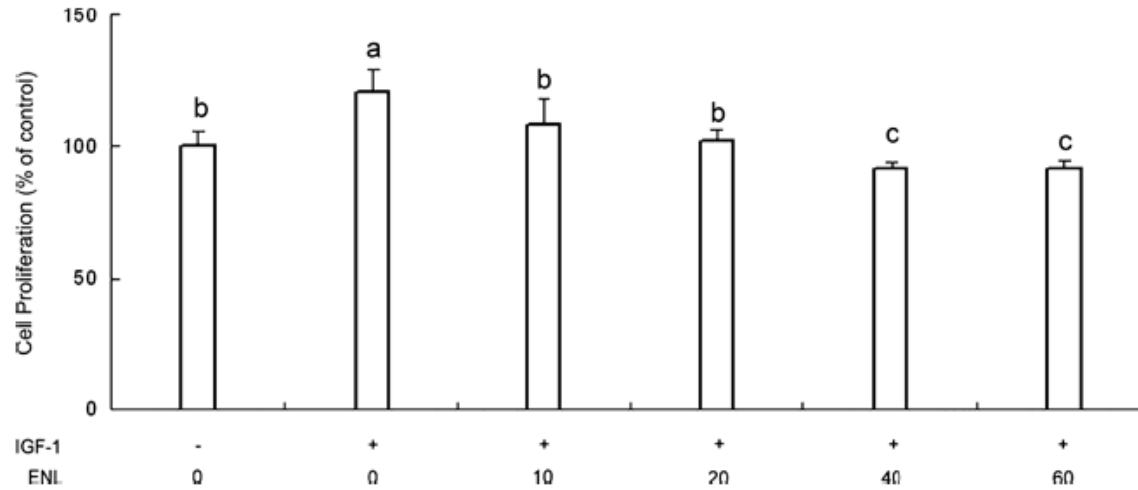
# Layout

Your figure should generally fit into a square or rectangle



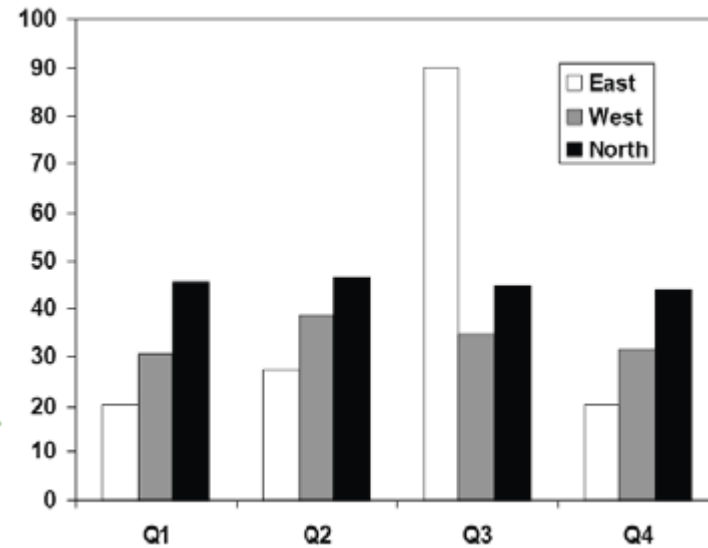
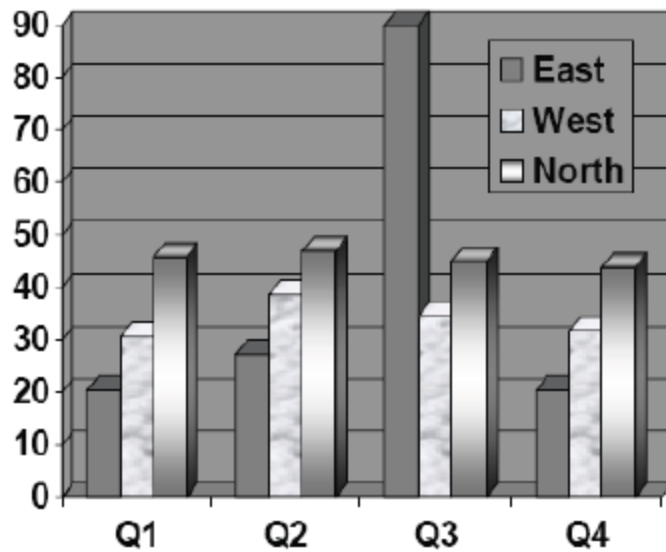
Layout

Eliminate extra space



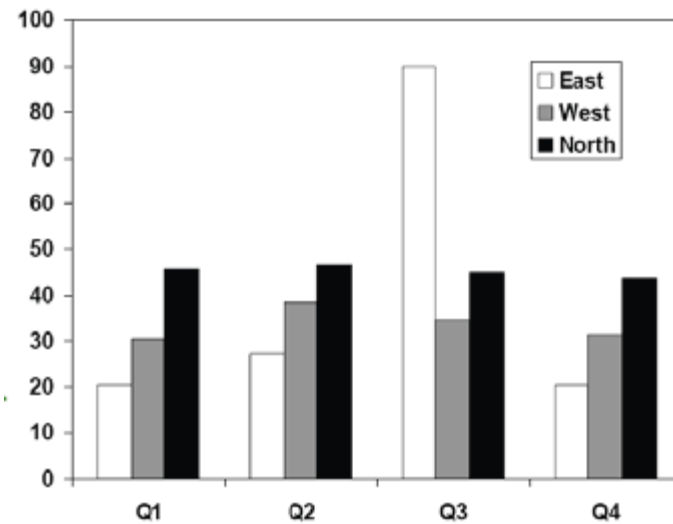
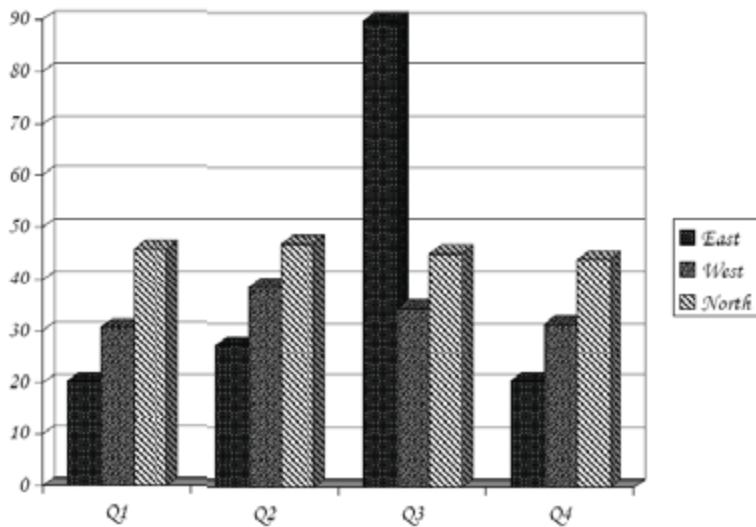
# Layout

Remove background lines and shading, 3-D depth, and transitional shading



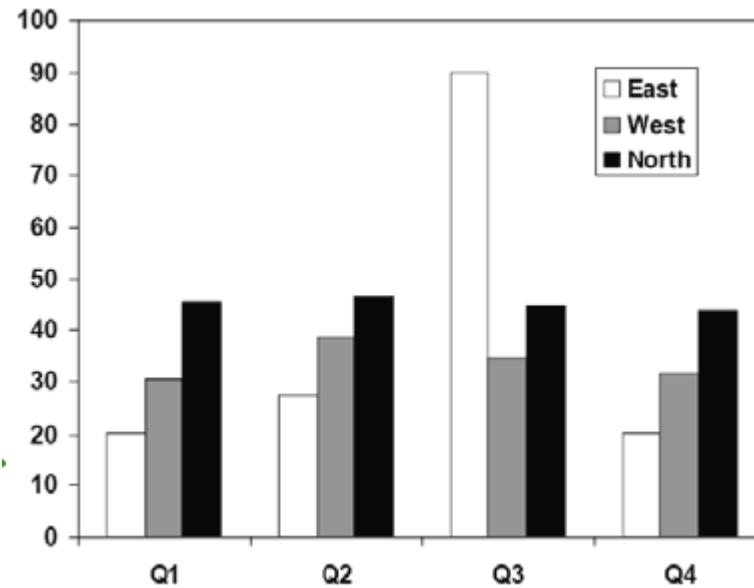
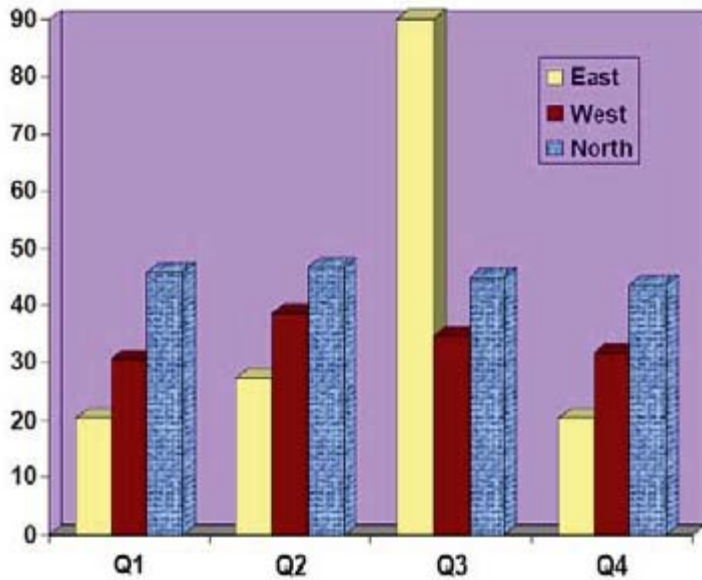
# Layout

Avoid unnecessary hatching, place figure keys within the figure, and use a clear font, preferably Arial



# Layout

Remove unnecessary color; use black, white, and gray if possible



# Content



- X and Y axes should be clearly labeled
- Panels should be labeled A, B, C, etc. in the upper left corner. Do not use periods or parentheses
- SI Units should be provided if appropriate
- Ranges must be presented with no gaps or overlaps:
  - BMI <25, BMI >25
  - BMI <25, BMI ≥25
  - Age: ≤65 y, ≥65 y
  - Age: ≤65 y, >65 y

# Content



For figures or tables that are *adapted* or *reproduced* from a published source, include the following statement at the end of the figure legend:

[Adapted with permission from (ref. #)]

or

[Reproduced with permission from (ref #)]

Obtain written permission from the copyright bearer and send a copy to the ASN office.

- Assemble any multi-panel figures into 1 image; rather than sending 4 files or a PDF with multiple pages (Fig1A, Fig1B, Fig1C, Fig1D), the 4 parts should be assembled into 1 piece and supplied as a single image on a single page.**

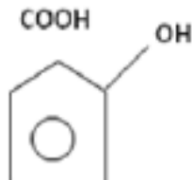


# Image Quality

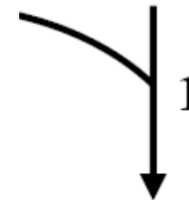
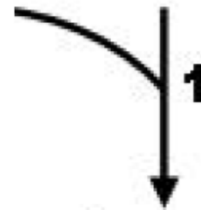
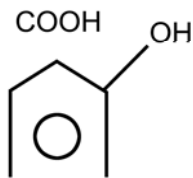
All lines, type, and images should be crisp, clear, and complete



2,3DHBA



2,3DHBA



0 CONTROL



0 CONTROL



Fatty acyl  
CoA



Fatty acyl  
CoA

# Image Quality

Images should have good resolution / no pixelation

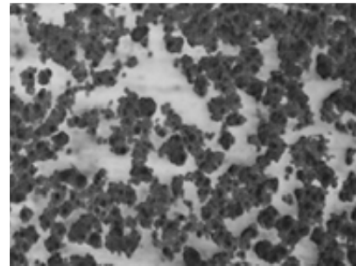
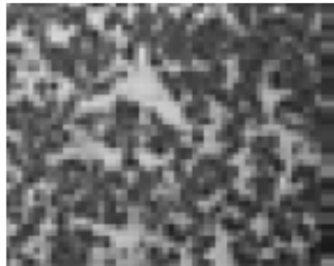


Image  
Quality

Type cannot be cut off

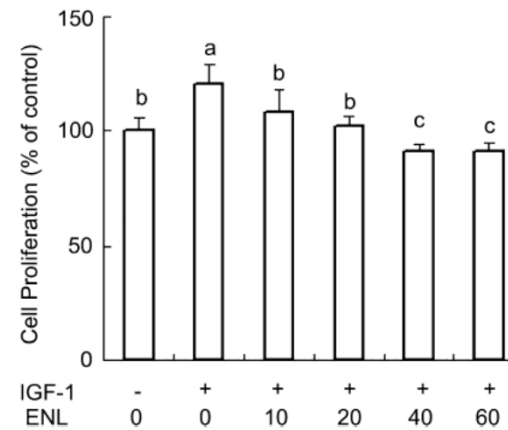
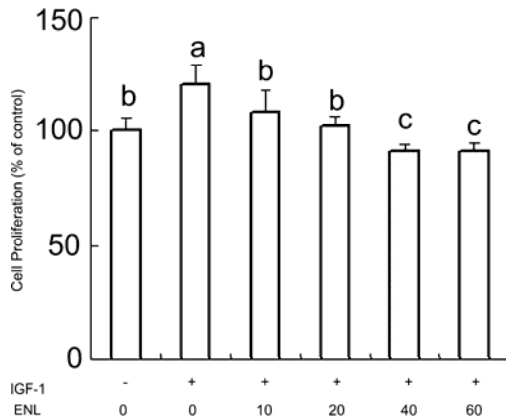


ENL (-) IGF-1 (-)  
ENL (-) IGF-1 (+)  
ENL(+) IGF-1 (+)

ENL (-) IGF-1 (-)  
ENL (-) IGF-1 (+)  
ENL(+) IGF-1 (+)

# Image Quality

The text and content must be of uniform or proportionate size



# Image Quality

The text and content must be of uniform or proportionate size

